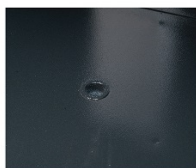


| Model No.       | External<br>H x W x D (mm)  | Internal<br>H x W x D (mm) | Weights | Capacity  | In tray / drawer | Shelf |
|-----------------|---|----------------------------|---------|-----------|------------------|-------|
| F-H38C/F-H38E   | 310 x 420 x 355   | 204 x 314 x 236            | 37kgs   | 16 litre  | 1                | -     |
| F-H58C/F-H58E   | 360 x 490 x 425   | 236 x 381 x 306            | 57kgs   | 28 litre  | 1                | -     |
| F-V58C/F-V58E   | 500 x 350 x 425   | 381 x 236 x 306            | 57kgs   | 28 litre  | 1                | 1     |
| F-V100C/F-V100E | 612 x 500 x 470 (without caster)<br>670 x 500 x 470 (with caster)   | 470 x 360 x 310            | 105kgs  | 52 litre  | 1 (drawer)       | 1     |
| F-V180C/F-V180E | 810 x 590 x 505 (without caster)<br>880 x 590 x 505 (with caster)   | 666 x 446 x 345            | 180kgs  | 102 litre | 1 (drawer)       | 2     |
| F-V380C/F-V380E | 1320 x 700 x 630 (without caster)<br>1385 x 700 x 630 (with caster) | 1145 x 530 x 460           | 335kgs  | 280 kgs   | 1 (drawer)       | 3     |

## FEATURES & DESIGN



Mounting Hole



Tongue & Groove



Active Bolt



## OPTION FOR LOCK SYSTEM



Key/Combination Lock

This time-tested combination locking device has over a million permutations. The dial features a spy proof cover for extra protection.

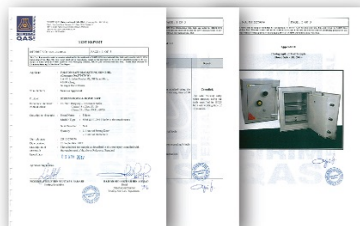


Key/Digital Lock

This is a convenient and easy to use feature. Employing the use of an 8-bit microprocessor chip, the digital lock system is operated by simple touch. Your secret code can consist of 4 to 8 digits. You can program your own access code in seconds. A time delay lock-out is activated if the false number is entered more than 3 times.



JIS S 1037 : 1989 FIRE RESISTANT CONTAINERS



ANSI/UL 687 : 1981 and MS 1297:1992 SPECIFICATION FOR FIRE AND BURGLARY RESISTANT OFFICE SAFES.



Fire tested and certified by JIS Japanese Standard



CE European Conformity on Digital locks

[www.falconsafe.com](http://www.falconsafe.com)

This Catalogue has been designed for distribution throughout many international markets. Thus, some specifications, comparisons and information set forth herein may not apply in all markets. Falcon's policy is one of continuous improvement, the right to change specifications without prior notice is reserved.

## AUTHORISED DEALER



Reg. No: 43Q17689



A sleek modern design of fire resistive and security safe for personal, home and small office use. It provides the best protection of your documents and valuables against threat of unforeseeable fire and burglary attack.



F-H38C

#### F-H38

Net Weight: 37kgs  
External Dimension: H310 x W420 x D355  
Internal Dimension: H204 x W314 x D236  
Locking System: combination (dial) or digital  
Features: 1 in-tray, mounting hole



F-H38E



F-H58C

#### F-H58

Net Weight: 57kgs  
External Dimension: H360 x W490 x D425  
Internal Dimension: H236 x W381 x D306  
Locking System: combination (dial) or digital  
Features: 1 in-tray, mounting hole



F-H58E



F-V58C

#### F-V58

Net Weight: 57kgs  
External Dimension: H500 x W350 x D425  
Internal Dimension: H381 x W236 x D306  
Locking System: combination (dial) or digital  
Features: 1 in-tray, 1 adjustable shelf, mounting hole



F-V58E



F-V100C



F-V100E

#### F-V100

Net Weight: 105kgs  
External Dimension: H612 x W500 x D470 (without caster) | H670 x W500 x D470 (with caster)  
Internal Dimension: H470 x W360 x D310  
Locking System: combination (dial) or digital  
Features: 1 lockable drawer, 1 adjustable shelf, mounting hole



F-V180C



F-V180E

#### F-V180

Net Weight: 180kgs  
External Dimension: H810 x W590 x D505 (without caster) | H880 x W590 x D505 (with caster)  
Internal Dimension: H666 x W446 x D345  
Locking System: combination (dial) or digital  
Features: 1 lockable drawer, 2 adjustable shelf, mounting hole



F-V380C



F-V380E

#### F-V380

Net Weight: 335kgs  
External Dimension: H1320 x W700 x D630 (without caster) | H1385 x W700 x D630 (with caster)  
Internal Dimension: H1145 x W530 x D460  
Locking System: combination (dial) or digital  
Features: 1 lockable drawer, 3 adjustable shelf, mounting hole